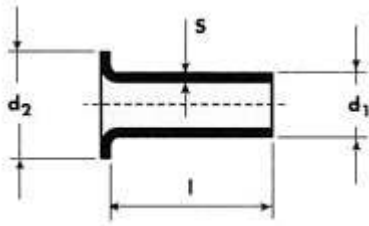
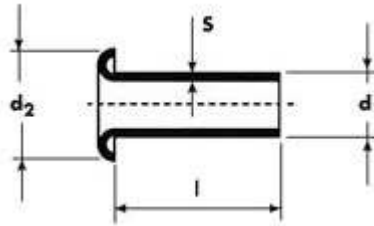


Unlike conventional drawn eyelets tube eyelets are made from precision tube which gives them a superior quality and are available in much greater lengths.

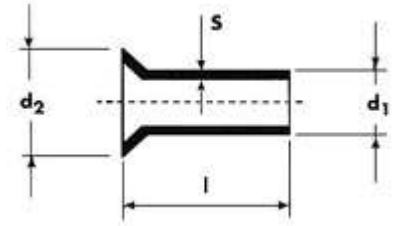
Types of head:



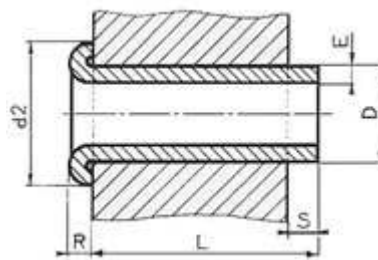
Type A: Flat Head



Type B: Round Head



Type C: Countersunk Head



Material:  
Brass (clean and plated),  
Copper, Steel, Aluminium  
and Stainless Steel.

### EYELET DIMENSIONS (mm)

Diameter D	1.2	1.5	2	2.5	3	3.5	4	4.5	5	5.5	6	8
Diameter d1	0.03	0.03	0.03	0.05	0.05	0.07	0.07	0.07	0.07	0.07	0.1	0.1
Int. Diameter (+/- 0.1)	0.8	1	1.4	1.9	2.4	2.9	3.2	3.7	4.1	4.5	5.14	7
Thickness E	0.2	0.25	0.3	0.3	0.3	0.3	0.4	0.4	0.45	0.5	0.43	0.5
Diameter d2	2	2.5	3.2	4	4.5	5.2	6	6.6	7.5	8.1	9	12
Tolerance on Diameter d2	0.15	0.20	0.20	0.20	0.20	0.30	0.30	0.30	0.30	0.30	0.30	0.30
Roll R.	0.25	0.30	0.40	0.40	0.50	0.50	0.60	0.60	0.70	0.80	0.90	1
Length S.	1	1.2	1.5	1.6	1.8	2.2	2.5	2.5	2.5	3	3.5	4.5
Length L. (min. max.)	1-15	1.5-40	2-60	2-60	3-100	3-120	3-120	3-80	3.80	4-80	4-80	4-80

### TOLERANCE ON LENGTH

1 to 3 mm	3.5 to 6 mm	6.5 to 10 mm	10.5 to 20 mm	20.5 to 30 mm	30.5 to 60 mm	60.5 to 80 mm
+/- 0.12	+/-0.15	+/-0.18	+/-0.20	+/-0.25	+/-0.30	+/-0.35

### Application Methods

We have a wide range of setting equipment to suit all levels of production and every pocket. From hand tools and small manual machines to fully automated machines that deliver significant improvements in productivity.



### Hanolex Ltd

246 Whitworth Road  
Rochdale  
Lancashire  
OL12 0JL

t: 01706 656 789

f: 01706 659 911

e: sales@eyelets.co.uk

[www.eyelets.co.uk](http://www.eyelets.co.uk)